

## I/AlarmPlus



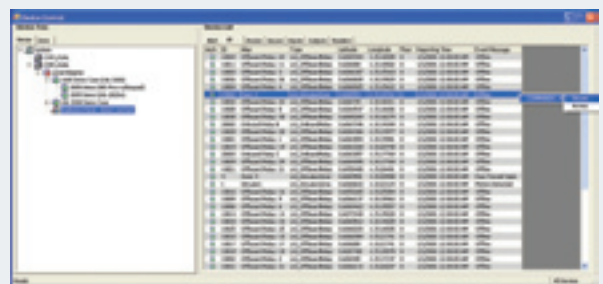
I/AlarmPlus is a suite of products that provide the foundation for security monitoring. It provides monitoring and detection capabilities by interfacing with a wide variety of alarms, including access control systems, video surveillance systems, and intrusion detection systems.

I/AlarmPlus provides two-way connectivity and data exchange between a command-and-control system and third-party alarm system controllers. The desktop application resides alongside the Intergraph I/Dispatcher application and allows operators to effectively respond to alarms.

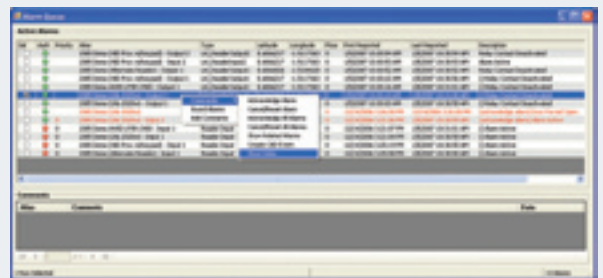
With I/AlarmPlus, you can aggregate alarms, apply business rules associated with the receipt of alarms, display alarms with administrator-defined visual queues (such as blinking icons), and log all actions associated with the alarms. Logging of all alarm conditions is important as it facilitates post-event forensic analysis. Additionally, I/AlarmPlus can generate events that trigger response plans in I/Consequence to provide predetermined action checklists for specific alarm events.

### KEY FEATURES

- Supports two-way connectivity and data exchange between the dispatch environment and third-party alarm system controllers
- Automatically creates events based on information received from alarm controllers and supports alarm acknowledgement
- Represents alarm devices, display device conditions, and status on a common map representation
- Controls security devices through the map representation
- Controls alarm system devices through a single interface, enabling a common operating picture
- Effectively combines the view of incidents, alarm state, and response units
- Interfaces with a variety of new and legacy systems
- Available on a highly reliable (99.99% to 99.999%) switched network



The I/AlarmPlus user interface contains three sections – the Device Tree, the Device List, and the Alarm Queue – that provide the physical topology of alarms, their status, and an enterprisewide view of all alarm devices.

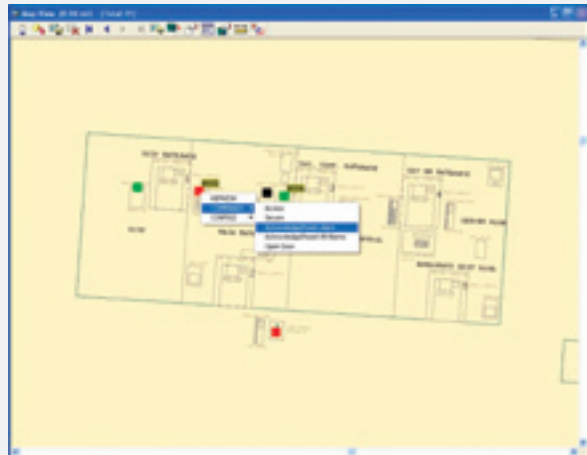


With I/AlarmPlus, operators can right-click on an alarm device entry from the list view and select a command applicable to that particular device.

- Tightly coupled with a common map representation
- Seamlessly integrates with all other commercial off-the-shelf (COTS) applications to share data and information between all systems
- Provides a highly scalable, multi-tiered, multi-site, and highly reliable environment
- Enhances and augments the I/CAD product suite with modules that provides comprehensive detection and assessment capabilities



I/AlarmPlus displays sensor/alarm devices with their appropriate status color, showing the geospatial position of all items in an enterprisewide map view.



Just as in the I/AlarmPlus list view, operators can also right-click on an alarm device icon and select a command applicable to that particular device.

## ABOUT INTERGRAPH

Intergraph Corporation is the leading global provider of spatial information management (SIM) software. Security organizations, businesses and governments in more than 60 countries rely on the company's spatial technology and services to make better and faster operational decisions. Intergraph's customers organize vast amounts of complex data into understandable visual representations, creating intelligent

maps, managing assets, building and operating better plants and ships, and protecting critical infrastructure and millions of people around the world.

For more information, visit [www.intergraph.com](http://www.intergraph.com).

